



# HELP & SHELTER



**Annual Report 2016**

# Services offered



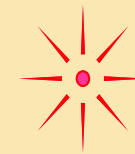
**Face-to-face and hotline counselling**



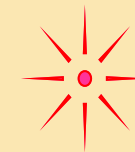
**In-court support to clients during legal proceedings**



**Referral of clients**



**Strengthening existing networking and developing new linkages**



**Training & upgrading of volunteers**



**Public education & advocacy**



**Shelter for abused and trafficked women & minor children**

## **Table of Contents**

Introduction .....	04
Our Board of Directors .....	05
Our Chairperson's Remarks .....	06
2016 Projects & Activities .....	7— 12
The Shelter .....	13— 14
Volunteers .....	14
Our Statistics, Finances & Conclusion.....	15—16
Audited Financial Statements .....	17—27
Comparison of Income and Expenditure .....	28 —29

## **INTRODUCTION**

Help & Shelter is a non-governmental organisation established in November 1994, that has become a recognized leader in the fight against violence in Guyana, particularly in the areas of domestic and sexual violence and child abuse.

We are a company limited by guarantee with charitable status. The members in general meeting elect our board of directors annually and day-to-day operations are carried out by a combination of paid staffers and volunteers.

### ***Our Mission***

Our mission is to work towards the elimination of violence in all its forms by helping to create a society where attitudes to the use of violence and practices of violence have been transformed.

### ***Our philosophy***

We believe:

- that the culture of tolerance of violence must and can be changed through education
- that everyone is a unique and valuable person
- that everyone has the right to take control of their own life
- in equal human rights
- that no one has the right to be violent to another person

## Our Board of Directors



**Josephine Whitehead**



**Pamela Nauth**



**Patricia Plummer**



**Gaitrie Shivsankar**



**Linda Hustler—Gray**



**Kevin Massiah**



**Danuta Radzik**



**Shondelle Branche**



**Selina Lepps**



**Desiree Ramdeen**



**Margaret Kertzious**



**Niveta Shivjatan**



# Our Chairperson's Remarks

As we reflect on 2016 and the many persons who accessed our services, we are very appreciative that we were able to keep our doors open to provide quality services to our clients and shelter residents.

Despite making significant progress since our establishment, there is still a lot more work to be done. Far too many people suffer in silence and are sexually violated, beaten or murdered, often by those they trust the most.

We are still to achieve the cultural change that would make the scourge of violence in our society unacceptable in every circumstance. We recognize that addressing gender-based violence in its many forms requires multiple strategies, from working to change social norms to assisting survivors in rebuilding their lives.



We call not only on our partners and supporters but on each stakeholder to recommit to creating environments in their respective communities where gender-based violence and violence in any form are unacceptable.

All of us at Help & Shelter are committed to ending violence in all its forms and will continue to advocate for further measures to be effectively implemented.

The news of our increased government subvention for 2017 was extremely welcome, and we hope that this level of support will continue.

With grateful thanks to all our dedicated and tireless personnel, volunteers and supporters.

# **2016 Projects & Activities**

## **USAID Youth and Citizens' Participation Program**

Help & Shelter will receive approximately \$9.1 million from Counterpart Int. / USAID to implement a social cohesion project from August to November 2016.

The project action entailed community based action in 5 target communities and in-house training for Organisation development. The objectives were:

- To identify, through consultations with communities, the strategies and tactful use of communicative mediums for strengthening community cohesion.
- To scale up the capacity of community-based stakeholders to respond to, and mitigate core social issues which contribute to social discord.
- To manage and utilize material and human resources to deliver programmes which raise awareness and promote community cohesion and safe environment for women and youth.
- To Offer counseling support and psychosocial services for the target communities where persons have been negatively impacted by social diversion, violence and discord.
- To establish and strengthen core community groups via training, sensitization programmes and sporting activities which galvanizes strong citizens actions and advocacy for community integration and peace.

### **Results**

- 659 Persons directly engaged via project action (approximately 80% youth & women)
- 50 exchange programmes
- 34 persons received counselling
- 17 activities were conducted during project period
- 12 Help & Shelter personnel trained in several Intervention skill sets.

### **Impact**

The project provided an opportunity for an organization with over 2 decades of experience in community-based work and advocacy for the vulnerable and abused to expand the scope of its intervention to address a critical phenomenon which have impacted most communities across the national landscape.

# **2016 Projects & Activities cont'd**

## **H & S/UNTF Project – Preventing Violence through Creating Safer Schools and Communities**

In January 2016, Help & Shelter received a grant from the United Nations Trust Fund to End Violence against Women (UNTF) for 3 years to undertake gender-based violence work in the communities of Beterverwagting and Mon Repos on the East Coast of Demerara.

The overall objective of the project is to promote the safety of female adolescents from gender-based violence. Primary beneficiaries of the project are women and girls survivors of violence, and secondary beneficiaries include men and boys, education professionals and other service providers.

Projected outcomes of the project are:

- Female adolescents in 3 schools improve attitudes, norms, practices & behaviours toward sexual and gender-based violence
- Education professionals and community service providers in the 3 schools have capacities to enhance prevention and provide adequate response to sexual and gender-based violence

Seeking to realize these outcomes, Help & Shelter has been conducting sensitization and creative arts sessions once weekly in Beterverwagting secondary and primary schools and Mon Repos primary school with students in grades 5, 6, 8 and 10. Capacity-building workshops were completed with teachers and service providers during 2016 and parents were engaged through meetings with the various parent teacher associations.

- During the year sessions were conducted with 166 girls and 187 boys. Through the workshops we reached 50+ male and female teachers and approximately 18 service providers including police and school welfare officers and faith-based leaders. Counselling was also provided to several students, parents and other family members.

This project will continue until January 2019.



# 2016 Projects & Activities cont'd

## Help & Shelter/UNICEF – New Child Protection Project

The first quarter of the third phase of the project was implemented from October to December 2016.

### Project objectives were:

1. Training for community level leaders (including faith-based leaders) with capacity to lead in the prevention and response of violence (especially sexual violence against children)
2. Signed Convention on the Rights of the Child-friendly agreement outlining the faith-based organisations' stance in preventing responding to and reporting child sexual violence
3. Expanding the community and national level awareness on local actions to reduce child sexual abuse sensitisation campaigns and through human interest stories
4. Providing counselling and psychosocial skills to community FBOs and stakeholders for stronger networking responses to violence against children and the family.

### Project achievements included:

- Parenting and CSA Awareness session completed, with 120 parents/adults directly engaged
- 69 youths/children engaged in awareness sessions on safe practices and child abuse response and services
- Community action teams re-engaged in training in child sexual abuse & response, reporting and victims support/referrals
- Counselling services available in all target communities
- 23 faith-based leaders from Hindu, Muslim, Christian and Rastafarian groups trained
- 16 community stakeholders trained in child counselling techniques and psychosocial support for child victims of child sexual abuse and violence
- Faith-based groups signed a pledge of support for prevention of sexual violence against children under the theme: "Keeping the promise to protect". The theme was promoted via book markers distributed to faith-based leaders and others who use books in their religious teachings
- 71 people attended a special public event held during the 16 days of activism against violence against women under the theme "Keeping the Promise to Protect" The focus of the event was linking the prevention of violence against women to protecting children from abuse and violence
- Human interest stories were compiled

# 2016 Projects & Activities cont'd

## **Ministry of Education – Safer Schools Pilot Programme**

The safer schools project was essentially completed in 2015, but with financial resources remaining, Help & Shelter was allowed to carry out additional work in the Wales/Potentia communities. Activities included counselling support, parenting sessions, community meetings and teachers training workshops.

## **Public Education**

Apart from funded project work, the public education department continued to provide facilitation for particular groups on request, including youth, community and faith-based groups, schools and PTAs, technical institutes and health centres.

We also participated in exhibitions and workshops organized by the government, NGOs and other agencies, discussing our work, sharing information on relevant issues and distributing resource materials.

Help & Shelter afforded interviews to various print and electronic media personnel and assisted students of the University of Guyana and Institute for Distance and Continuing Education among others.

## **Men's Sessions**

### **Overview**

The men's sessions began on 4 September 2013 with the intention of offering an additional component to the counseling programme. The original aim was to provide education sessions for male perpetrators of domestic violence referred to Help & Shelter by the court but the sessions are now open to other men who are encountering challenges managing conflict in their relationships, have issues with anger or violence or other issues relating to family.

## **Men's Sessions — Con't**

Sessions are conducted on Thursdays from 5 pm. Participants are asked to attend seven sessions but are also encouraged to remain in the programme thereafter. The areas covered in the sessions include: understanding self, managing anger, resolving conflict, domestic violence, addressing male norms that contribute to violence, healthy relationships and time management, with several cross-cutting areas where necessary.

### Attendance

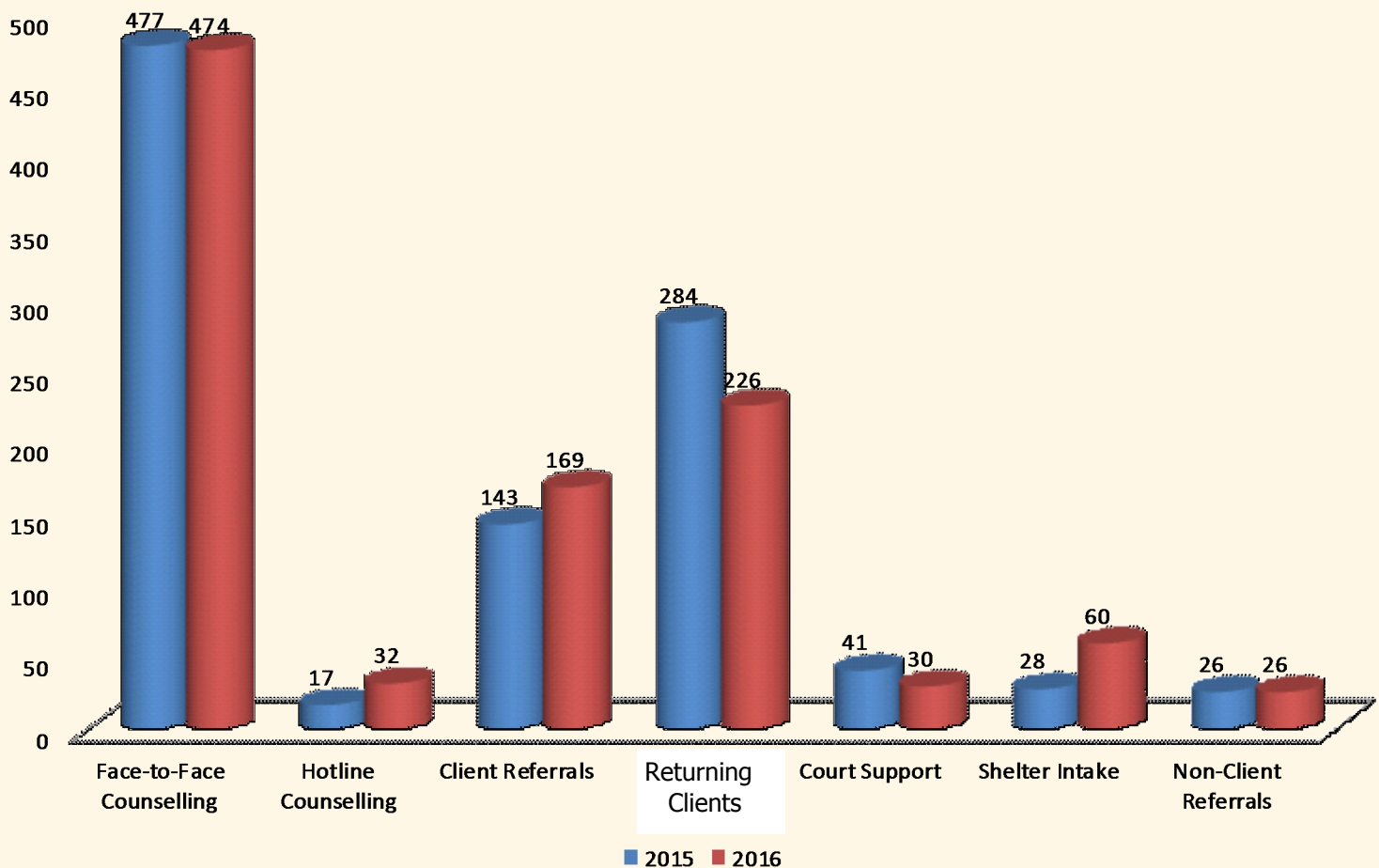
Participants attending the session comprise men aged 18 to 60+ of varying ethnicities and social status. We have had persons coming from as far as Essequibo, Linden and Berbice.

In 2016, nineteen men were referred to the men's sessions. Those who attended were referred by the courts and in-house counsellors. The year saw an improvement in the commitment of men to complete the required number of sessions, with 85 % attending five or more sessions.

Those reached include men of varying ethnicities, social status and age groups. Through these engagements, it was observed that contributors to the challenges faced include extended family influences, interracial issues, financial difficulties, lack of information and communication skills, infidelity in relationships and most notably as most of the men were in relationships involving young children, frustrations arising from parenting styles.

An example of the success of the sessions, is that one individual who has been a part of the sessions since May 2015, has been collecting resource materials and sharing them with men and women and has also been encouraging men to attend the sessions and persons with domestic problems to access Help & Shelter's counselling services.

## Comparison of services - 2015 & 2016



The above graph shows a comparison of our services during 2015 and 2016 it can be seen that there were increases in some areas and decreases in others.

A total of 1,017 services were rendered in 2016 as compared to 1,019 in 2015

There were increases in Hotline Counselling, Client Referrals, Shelter Intake and decreases in Face-to-Face, Returning Clients and Court Support.

# The Shelter

Shelter operations continued to be supported by the government of Guyana with a subvention.

The shelter managers continued to receive the advice and guidance of the shelter committee in the running of the shelter and residents' evaluations continued to be administered with a view to improvements in shelter operations being made when necessary.

During 2016, 163 persons 75 women and 88 children were given refuge at the shelter. They were victims of domestic violence and their children and female victims trafficking in persons.

The length of stay ranged from 1 to 177 days.

Efforts continued to be made to keep expenses to a minimum by soliciting regular donations of foodstuffs and other supplies from private enterprises, planting fruits and vegetables in the garden and through the hydroponic project supported by Partners of the Americas. Small—scale poultry rearing was also continued with the aim of producing chickens and ducks for own use.

## Shelter Activities

Residents continued to be encouraged to make use of the gym and the library and to participate in educational and skills training sessions conducted by volunteers and one shelter counsellor.



# Shelter Con't

## British High Commission/UK Government Support

The funding of £20,000 from the UK Foreign & Commonwealth Office through the British High Commission in Georgetown received in 2015 enabled us to continue our counselling, advocacy and referral services for the alleviation of domestic & sexual violence and child abuse until the end of June 2016.

We also received further support to enable much-needed shelter repairs to be done and the employment of a night manager and child carer at the shelter until the end of August 2017.

## Volunteers

### We Rely Heavily on the Help of Our Volunteers.

Volunteers are a critical part of the day-to-day functioning of our organization, performing a variety of tasks such as direct work with women and children, hotline advocacy, administrative work, shelter clean-ups, children's parties, maintenance projects and much more.

### Training & Activities

Volunteers continued to receive orientation and training during the year and there were a number of upgrading sessions were held.

Volunteers also benefited from capacity building training to complement their knowledge when working in the field.

Some volunteer activities included outreach programs to Wakenaam, Essequibo Coast-Red Village, Swan Village and a Christmas party for the children of Red Village



## **Our Finances**

Our adherence to high standards of financial transparency continued.

There were the following significant changes in fixed assets during 2016 : acquisition of projector, transformer, filling cabinet

In addition to the \$10 million subvention received from the government, we continued to receive regular donations in cash and kind from a number of long-standing supporters, for which we are extremely grateful, and our fundraising dinner in April raised over \$1.8 million.

Nevertheless, when the UK Foreign & Commonwealth Office-funded counselling support came to and on 30 June 2016 and we learned that further support would not be possible, we faced the prospect of having to reduce our counselling coverage, and appealed for support through letters to the private sector through print, electronic and social media and direct approaches to relatives and friends, and request further support from the government. One of the directors also began organising the placement of donation boxes in various supermarkets.

Proposals for funding were submitted to various donor agencies throughout the year, but without success, largely, we believe, due to Guyana being a middle income country and not high on the funding priority list. We had high hopes of securing another EU-funded project and were particularly disappointed when it was rejected in December.

We were, however, able to manage to keep our services fully functional and were elated to learn towards the end of the year that we would receive a vastly increased subvention of \$31.224 million for 2017, which would not only cover shelter operations but contribute towards counselling and other services.

We continued to regularly post an appeal for donations on our Facebook page at:

**<https://www.facebook.com/handsgy/>**

Our audited financial statements and auditors' report thereon are on pages 17 to 24

We continued to regularly post an appeal for donations on our Facebook page at:

<https://www.facebook.com/helpandshelter>

### **Our Statistics**

We keep regularly update statistics relating to the various aspects of our work, all of which are available on our website at <http://www.hands.org.gy/>.

### **Conclusion**

Violence continues to permeate every area of life in Guyana, with levels of domestic and sexual violence and child abuse seemingly ever-escalating.

Violence is still seen as an acceptable way of resolving disputes generally and this mindset, added to persisting pernicious belief in many quarters in the right of men to control women and children as they see fit, results in an ever uphill struggle for us in our vitally important work.

Once again, we extend deep appreciation to all those who helped us in any way during 2016.



## **Nizam Ali & Company**

**Chartered Accountants**

**215 'C' Camp Street  
North Cummingsburg  
Georgetown**

**Tel:** (592)-227-8825  
**Tele/Fax:** (592)-225-7085  
**E-mail:** [admin@nizamali.net](mailto:admin@nizamali.net)

### **INDEPENDENT AUDITOR'S REPORT**

To the Members of Help and Shelter Inc.

#### **Report on the Audit of the Financial Statements**

##### **Opinion**

We have audited the financial statements of Help and Shelter Inc., which comprise the statement of financial position as at December 31, 2016, and the statements of income and expenditure, other funds and cash flows for the year then ended, and notes to the financial statements, including a summary of significant accounting policies.

In our opinion, the accompanying financial statements, present fairly, in all material respects, the financial position of the company as at December 31, 2016, and of its financial performance and its cash flows for the year ended in accordance with International Financial Reporting Standards for Small and Medium-Sized Entities (IFRSs for SMEs).

##### **Emphasis of Matter**

Without qualifying our opinion, we draw attention to note 1.1, which explains that the company's ability to continue as a going concern is dependent on ongoing contributions from the Government of Guyana, other funding agencies and donations.

##### **Basis for Opinion**

We conducted our audit in accordance with International Standards on Auditing (ISAs). Our responsibilities under those standards are further described in the Auditor's Responsibilities for the Audit of the Financial Statements section of our report. We are independent of the company in accordance with the International Ethics Standards Board of Accountants' Code of Ethics for Professional Accountants (IESBA Code) together with the ethical requirements that are relevant to our audit of the financial statements in Guyana, and we have fulfilled our other ethical responsibilities in accordance with these requirements and the IESBA Code. We believe that the audit evidence we have obtained is sufficient and appropriate to provide a basis for our opinion.

##### **Going Concern**

The Company's financial statements have been prepared using the going concern basis of accounting. The use of this basis of accounting is appropriate unless management either intends to liquidate the company or to cease operations, or has no realistic alternative but to do so. As part of our audit of the financial statements, we have concluded that management's use of the going concern basis of accounting in the preparation of the company's financial statements is appropriate.



### **Going concern, continued**

Except as described in Note 1.1, management has not identified any further material uncertainty that may cast significant doubt on the entity's ability to continue as a going concern. Based on our audit of the financial statements, we also have not identified further material uncertainty. Neither management nor the auditor can guarantee the company's ability to continue as a going concern.

### **Responsibilities of Management and Those Charged with Governance for the Financial Statements**

Management is responsible for the preparation and fair presentation of the financial statements in accordance with IFRS for SMEs, and for such internal control as management determines is necessary to enable the preparation of financial statements that are free from material misstatement, whether due to fraud or error.

In preparing the financial statements, management is responsible for assessing the company's ability to continue as a going concern, disclosing, as applicable, matters related to going concern and using the going concern basis of accounting unless management either intends to liquidate the company or to cease operations, or has no realistic alternative but to do so.

Those charged with governance are responsible for overseeing the company's financial reporting process.

### **Auditor's Responsibilities for the Audit of the Financial Statements**

Our objectives are to obtain reasonable assurance about whether the financial statements as a whole are free from material misstatement, whether due to fraud or error, and to issue an auditor's report that includes our opinion. Reasonable assurance is a high level of assurance, but is not a guarantee that an audit conducted in accordance with ISAs will always detect a material misstatement when it exists. Misstatements can arise from fraud or error and are considered material if, individually or in the aggregate, they can reasonably be expected to influence the economic decisions of users taken on the basis of these financial statements.

As part of an audit in accordance with ISAs, we exercise professional judgment and maintain professional skepticism throughout the audit. We also:

- Identify and assess the risks of material misstatement of the financial statements, whether due to fraud or error, design and perform audit procedures responsive to those risks, and obtain audit evidence that is sufficient and appropriate to provide a basis for our opinion. The risk of not detecting a material misstatement resulting from fraud is higher than for one resulting from error, as fraud may involve collusion, forgery, intentional omissions, misrepresentations, or the override of internal control.
- Obtain an understanding of internal control relevant to the audit in order to design audit procedures that are appropriate in the circumstances, but not for the purpose of expressing an opinion on the effectiveness of the company's internal control.
- Evaluate the appropriateness of accounting policies used and the reasonableness of accounting estimates and related disclosures made by management.



### Auditor's Responsibilities for the Audit of the Financial Statements, continued

- Conclude on the appropriateness of management's use of the going concern basis of accounting and based on the audit evidence obtained, whether a material uncertainty exists related to events or conditions that may cast significant doubt on the company's ability to continue as a going concern. If we conclude that a material uncertainty exists, we are required to draw attention in our auditor's report to the related disclosures in the financial statements or, if such disclosures are inadequate, to modify our opinion. Our conclusions are based on the audit evidence obtained up to the date of our auditor's report. However, future events or conditions may cause the company to cease to continue as a going concern.
- Evaluate the overall presentation, structure and content of the financial statements, including the disclosures, and whether the financial statements represent the underlying transactions and events in a manner that achieves fair presentation.
- Obtain sufficient appropriate audit evidence regarding the financial information of the company to express an opinion on the financial statements. We are responsible for the direction, supervision and performance of the company audit. We remain solely responsible for our audit opinion.

We are required to communicate with those charged with governance regarding, among other matters, the planned scope and timing of the audit and significant audit findings, including any significant deficiencies in internal control that we identify during our audit.

We are also required to provide those charged with governance with a statement that we have complied with relevant ethical requirements regarding independence, and to communicate with them all relationships and other matters that may reasonably be thought to bear on our independence, and where applicable, related safeguards.

From the matters communicated with those charged with governance, we determine those matters that were of most significance in the audit of the financial statements of the current period.

### Report on Other Legal and Regulatory Requirements

The financial statements comply with the requirements of the Companies Act 1991.

*Aileen Alix*  
Chartered Accountants  
Georgetown, Guyana

August 24, 2017



**Help and Shelter Inc.**  
**Statement of Financial Position**  
**As at December 31, 2016**  
**With comparative figures for 2015**  
**(Expressed in Guyana dollars)**

	Notes	<u>2016</u> \$	<u>2015</u> \$
<b>ASSETS</b>			
<b>Current Assets</b>			
Cash resources	3	15,091,210	24,360,851
Other assets	4	<u>135,000</u>	<u>242,400</u>
<b>Working Capital</b>		15,226,210	24,603,251
<b>Property, plant and equipment</b>	2	<u>69,551,143</u>	<u>68,310,980</u>
		<u>84,777,353</u>	<u>92,914,231</u>
<b>REPRESENTED BY:</b>			
<b>General fund</b>			
Balance - January 1		75,894,956	71,733,099
Transfer from other fund		(764,539)	4,810,905
Surplus (deficit)		<u>1,286,041</u>	<u>(649,048)</u>
Balance - December 31		<u>76,416,458</u>	<u>75,894,956</u>
<b>Other Funds</b>			
Government Subvention			-
UK Project		318,799	3,450,096
UNTF		1,331,899	8,840,809
UNICEF		2,750,500	2,342,095
MOE		520,237	1,386,275
USAID		<u>2,373,277</u>	<u>-</u>
		<u>7,294,712</u>	<u>16,019,275</u>
<b>Current liabilities</b>			
Other payables		66,183	-
Loan		<u>1,000,000</u>	<u>1,000,000</u>
		<u>1,066,183</u>	<u>1,000,000</u>
		<u>84,777,353</u>	<u>92,914,231</u>

The accompanying notes form an integral part of these financial statements.

  
 Director

  
 Director



**Help and Shelter Inc.**  
**Statement of Income and Expenditure**  
**For the year ended December 31, 2016**  
**With comparative figures for**  
**2015**  
**(Expressed in Guyana dollars)**

	<u><b>2016</b></u> <u><b>\$</b></u>	<u><b>2015</b></u> <u><b>\$</b></u>
<b>Income:</b>		
Grant income	24,425,034	17,919,863
Government subvention	10,000,000	10,000,000
Donations	4,468,042	5,690,914
Digicel shelter repairs	514,090	-
Other income	366,100	259,707
Fund raising dinner	4,159,180	1,513,932
Deed of covenant	400,000	500,000
Bank interest income	213,592	194,359
Volunteer's trust fund	283,500	224,800
	<u><b>44,829,538</b></u>	<u><b>36,303,575</b></u>
<b>Deduct</b>		
<b>Expenditure:</b>		
Employment costs	22,520,365	21,512,630
Stationery and office supplies	4,094,470	3,047,888
Meals and refreshments	3,757,820	2,983,109
Travel and transport	5,239,750	4,240,942
Mobilisation fees	605,000	660,000
Training materials	1,847,132	3,237,445
Telephone	786,656	746,429
Security	529,948	205,043
Insurance	324,442	219,340
Bank Charges	106,805	99,796
Fundraising expenses	1,309,210	-
Repairs and maintenance	2,421,899	-
	<u><b>43,543,497</b></u>	<u><b>36,952,622</b></u>
 (Deficit) surplus	 <u><b>1,286,041</b></u>	 <u><b>(649,047)</b></u>

The accompanying notes form an integral part of these financial statements.

**Help and Shelter Inc.**  
**Statement of Cash Flows**  
**For the year ended December 31, 2016**

**With comparative figures for**  
**(Expressed in Guyana dollars)**

	<b>2016</b>	<b>2015</b>
	<b>\$</b>	<b>\$</b>
<b>Cash flows from operating activities</b>		
Net surplus (deficit) before taxation	1,286,041	(649,048)
Adjustments for:		
<b>Working capital changes</b>		
Transfer (from) to general fund	(764,539)	4,810,905
Increase in other payables	66,183	-
Decrease in other assets	<u>107,400</u>	<u>896,956</u>
Net cashflow from operating activities	<u>695,085</u>	<u>5,058,813</u>
<b>Cash flows from investing activities</b>		
Purchase of equipment	<u>(1,240,163)</u>	<u>(894,398)</u>
Net cash used in investing activities	<u>(1,240,163)</u>	<u>(894,398)</u>
<b>Cash flow from financing activities</b>		
(Decrease) increase in other funds	<u>(8,724,563)</u>	<u>4,492,651</u>
Net cash from financing activities	<u>(8,724,563)</u>	<u>4,492,651</u>
<b>Net (decrease) increase in cash and cash equivalent</b>	<b>(9,269,641)</b>	<b>8,657,066</b>
<b>Cash and cash equivalent - January 1</b>	<u>24,360,851</u>	<u>15,703,785</u>
<b>Cash and cash equivalent - December 31</b>	<b><u>15,091,210</u></b>	<b><u>24,360,851</u></b>
<b>Comprised of:</b>		
Cash at bank	<u>15,091,210</u>	<u>24,360,851</u>
	<b><u>15,091,210</u></b>	<b><u>24,360,851</u></b>

**Help and Shelter Inc.****Statement of Other Funds****For the year ended December 31, 2016****(Expressed in Guyana dollars)**

---

	<b>Balance at 1/1/2016</b>	<b>Funds received during the year</b>	<b>Expenses paid during the year</b>	<b>Transfer</b>	<b>Balance at 31/12/2016</b>
	<b>\$</b>	<b>\$</b>	<b>\$</b>	<b>\$</b>	<b>\$</b>
Government Subvention	-	10,000,000	(10,764,539)	764,539	-
UK Project	3,450,096	2,050,280	(5,181,577)	-	318,799
MOE	1,386,275	-	(866,038)	-	520,237
UNTF Fund	8,840,809	-	(4,711,710)	(2,797,200)	1,331,899
Unicef	2,342,095	5,464,500	(5,056,095)		2,750,500
USAID	-	10,218,352	(7,845,075)		2,373,277
	<hr/>	<hr/>	<hr/>	<hr/>	<hr/>
	16,019,275	27,733,132	(34,425,034)	(2,032,661)	7,294,712

**Help and Shelter Inc.**

**Notes to Financial Statements**

**As at December 31, 2016**

**(Expressed in Guyana dollars)**

---

**1.1 Incorporation**

Help and Shelter was incorporated on November 24, 1994 under the Companies Act 89:01 as a company without share capital.

The principal activities of the company is the provision of social services. Funding for the company is derived primarily from annual government subvention and ongoing contributions from various funding agencies.

These financial statements have been prepared on a going concern basis, under which the company is assumed to be able to realise its assets and discharge its liabilities in the normal course of operations. The company's ability to continue as a going concern is dependent upon its ability to secure funding to finance its current and future operations.

**1.2 Significant accounting policies**

**(a) Basis of preparation**

These financial statements have been prepared in accordance with International Financial Reporting Standards for Small and Medium Sized Entities (IFRS for SME's) issued by the International Accounting Standards Board. They are presented in Guyana Dollars, which is the functional currency.

These financial statements have been prepared under the historical cost convention. The preparation of financial statements in conformity with IFRS for SMEs requires management to make estimates and assumptions that affect the reported amounts of assets and liabilities and disclosures of contingent assets and liabilities at the date of the financial statements and reported amounts of revenue and expenses during the reporting period. Actual results could differ from those estimates.

The estimates and underlying assumptions are reviewed by on an ongoing basis. Revisions to accounting estimates are recognised in the period in which these estimates are revised, if the revision affects only that period, or in the period of the revision and future periods, if the revision affects both current and future periods.

These financial statements were authorised for issue by the Board of Directors  
on.....

**Property, plant and equip-  
(b) ment**

No depreciation is charged on property, plant and equipment since the company is a non-profit organisation.

**(c) Income**

Income is recognised on the cash basis.

**Help and Shelter Inc.****Notes to Financial Statements****As at December 31, 2016****(Expressed in Guyana dollars)**

<b>2.</b>	<b>Property, plant and equipment</b>				
		<b>Land</b>	<b>Buildings</b>	<b>Office furniture &amp; equipment</b>	<b>Total</b>
		<b>\$</b>	<b>\$</b>	<b>\$</b>	<b>\$</b>
	<b>Cost</b>				
	January 1, 2016	3,500,000	54,250,000	10,560,980	68,310,980
	Additions	-	-	1,240,163	1,240,163
	December 31, 2016	3,500,000	54,250,000	11,801,143	69,551,143
	<b>Net Book values</b>				
	December 31, 2016	3,500,000	54,250,000	11,801,143	69,551,143

<b>3.</b>	<b>Cash resources</b>	<b><u>2016</u></b>	<b><u>2015</u></b>
		<b>\$</b>	<b>\$</b>
	Petty cash- Shelter Subvention	24,012	33,907
	H&S Current A/C # 651-741-1	318,799	3,450,096
	MOE Cash at Bank A/C -651-116-6 and Cash	520,237	1,386,275
	Unicef A/C 651- H&S Current A/C # 653-128-9	2,750,500	2,342,095
	H&S BCM # 484-185-4	546,533	2,337,465
		1,968,517	10,369,060
	Curr A/C 651-795- NBS Save and Prosper A/C	1,331,898	-
	H & S - BCM A/C	7,630,714	4,441,953
		-	
		<b>15,091,210</b>	<b>24,360,851</b>

**Help and Shelter Inc.**

**Notes to Financial Statements**

**As at December 31, 2016**

**(Expressed in Guyana dollars)**

		<u><b>2016</b></u>	<u><b>2015</b></u>
		<u><b>\$</b></u>	<u><b>\$</b></u>
<b>4.</b>	<b>Other receivables</b>		
	Staff Loan	<u>135,000</u>	<u>242,000</u>

**5. Loan**

This represent a loan from one of the Directors of the company. There is no fixed repayment term and no interest is charged on this loan.

**6. Financial Instruments**

The company's financial instruments comprise of cash and bank balances, accounts receivable, accounts payable and accrued charges

**(i) Credit Risk**

Credit risk on the other recievables is limited as other receivables are shown net of provision of bad debts. Management believes that there is no additional risk beyond amounts provided for collection losses.

**(ii) Liquidity Risk**

Liquidity risk is the risk that the company is unable to meet its payment obligations associated with its f financial liabilities when they fall due. Prudent liquidity risk manaement implies maintaining sufficient cash and cash equivalents and availability of funds through an adequate amount of committed credit faciltiltes.

**(ii) Fair values**

The fair values of cash and bank balances, other receivables , accounts payable and accrued charges are not materially different from their carrying amounts.

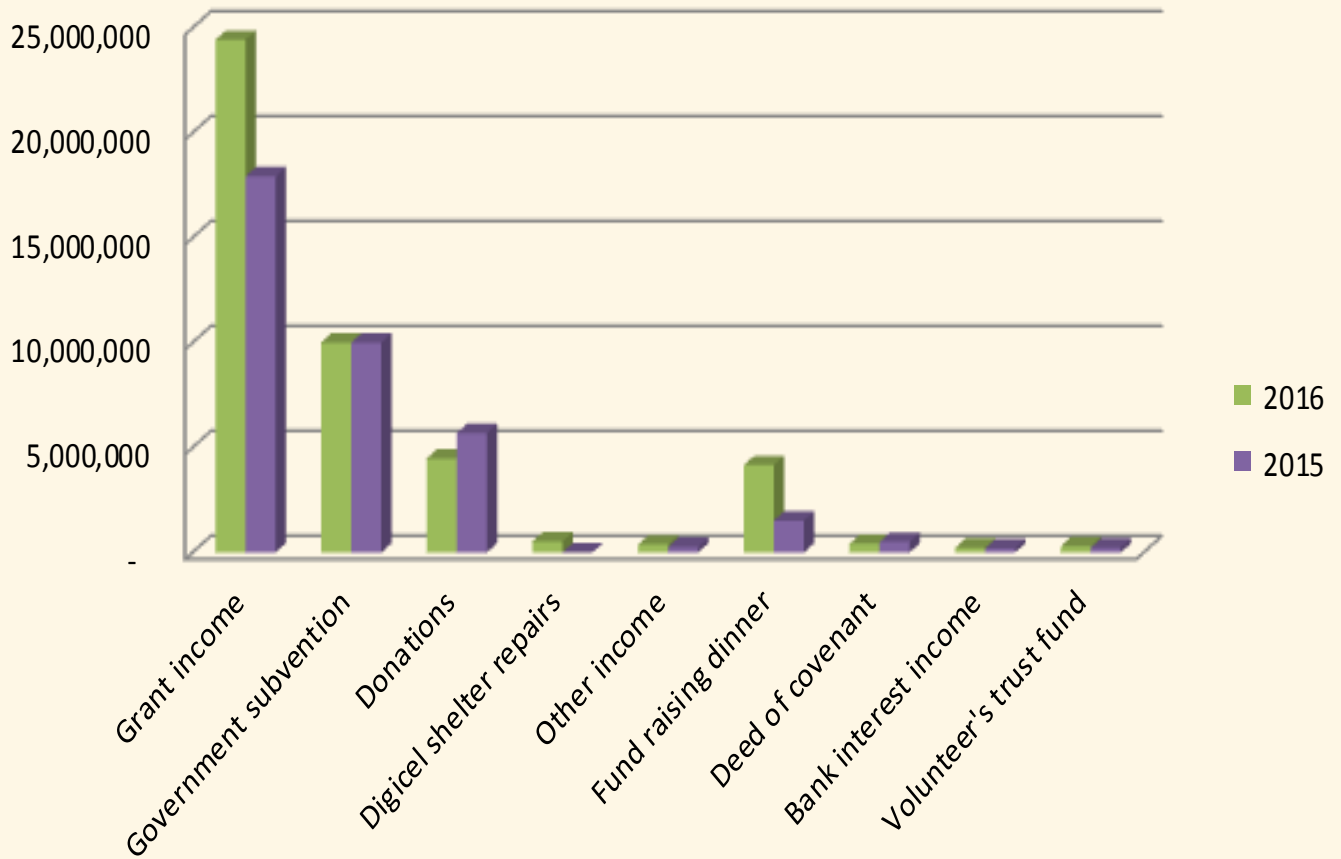


## Help & Shelter

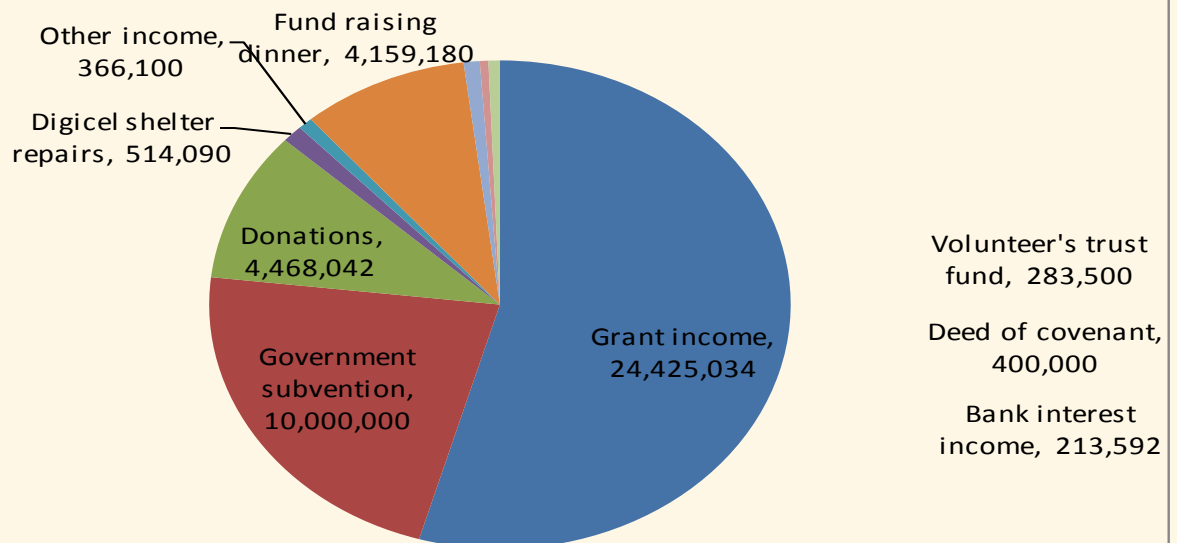
### 4 Years Summary of Income & Expenditure

	2016	2015	2014	2013
	\$	\$		
<b>Income:</b>				
Grant income	24,425,034	17,919,863	8,092,863	28,232,757
Government subvention	10,000,000	10,000,000	10,000,000	10,000,000
Donations	4,468,042	5,690,914	8,121,864	5,461,554
Digicel shelter repairs	514,090	-	1,230,000	2,870,000
Other income	366,100	259,707	165,811	2,104,988
Fund raising dinner	4,159,180	1,513,932	-	895,990
Deed of covenant	400,000	500,000	800,000	500,000
Bank interest income	213,592	194,359	10,993	309,830
Volunteer's trust fund	283,500	224,800	305,780	12,303
	<b>44,829,538</b>	<b>36,303,575</b>	<b>28,727,311</b>	<b>50,387,422</b>
<b>Deduct</b>				
Expenditure:				
Employment costs	22,520,365	21,512,630	16,173,504	31,387,506
Stationery and office supplies	4,094,470	3,047,888	3,093,767	7,293,674
Meals and refreshments	3,757,820	2,983,109	2,959,784	2,401,560
Travel and transport	5,239,750	4,240,942	2,167,600	2,847,708
Digicel shelter repairs	-	-	1,850,070	-
Mobilisation fees	605,000	660,000	-	-
Training materials	1,847,132	3,237,445	1,139,761	330,846
Telephone	786,656	746,429	506,707	231,099
Security	529,948	205,043	472,708	40,368
Insurance	324,442	219,340	218,216	167,861
Bank Charges	106,805	99,796	105,379	238,965
Fundraising expenses	1,309,210	-	-	-
Repairs and maintenance	2,421,899	-	-	-
Public Education	-	-	-	1,085,355
Refund			407,167	900,130
	<b>43,543,497</b>	<b>36,952,622</b>	<b>29,094,663</b>	<b>46,925,072</b>
<b>(Deficit) surplus</b>	<b>1,286,041</b>	<b>(649,047)</b>	<b>(367,352)</b>	<b>3,462,350</b>

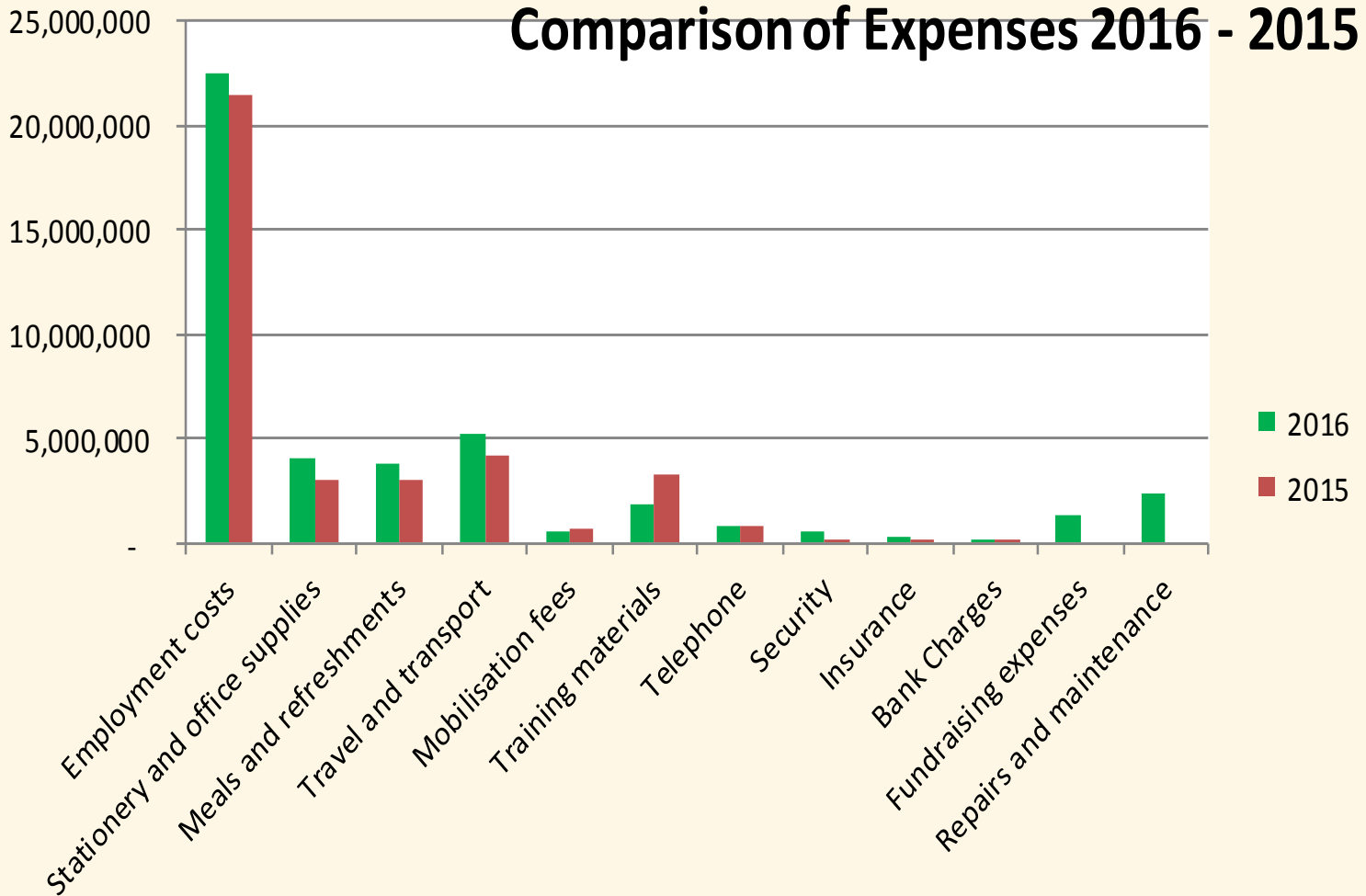
## Comparison of Income 2016-2015



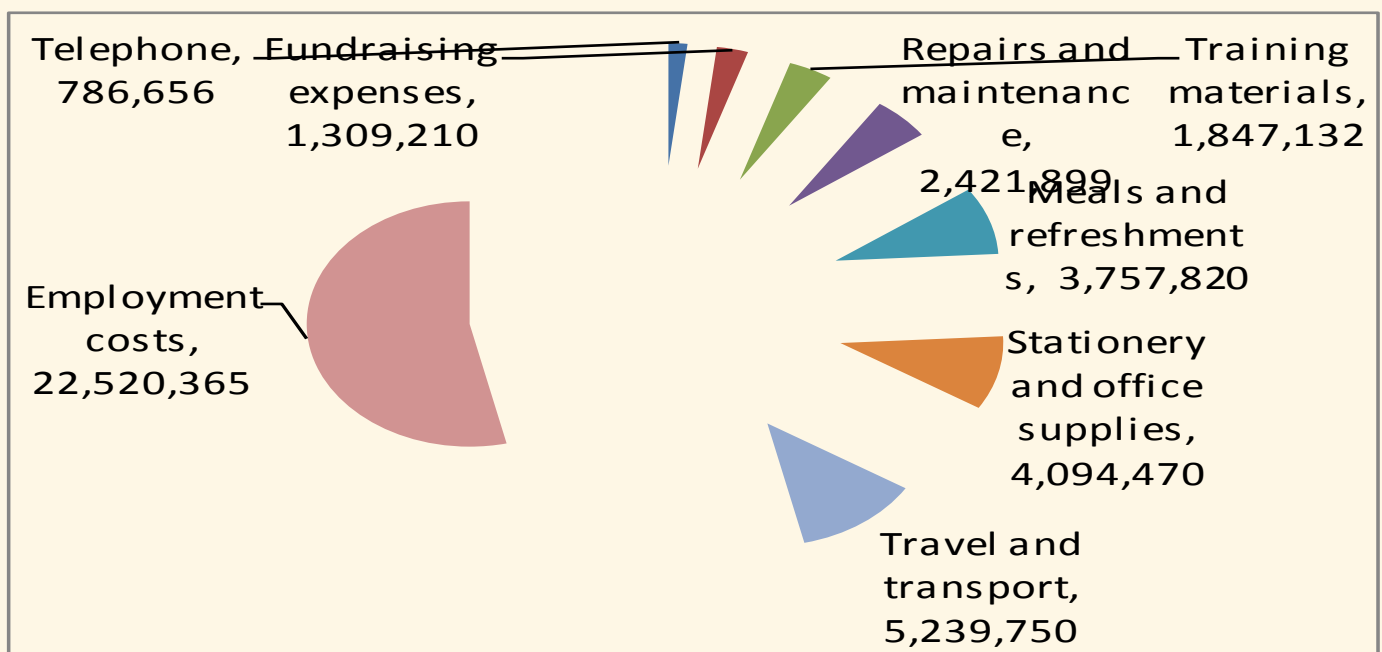
## Summary of Income 2016



## Comparison of Expenses 2016 - 2015



## Summary of Expenses 2016





# Help & Shelter

**Homestretch Avenue  
Durban Park  
Georgetown  
Guyana**

**Tel: +592-225-4731  
227-8353**

**Email: [hands@networksgy.com](mailto:hands@networksgy.com)**

**Web:**

**<http://www.hands.org.gy/>**

**Facebook:**

**<https://www.facebook.com/handsgy/>**

If you or someone you know is a victim of:

★ Domestic Violence

★ Child Abuse

★ Sexual Violence

★ Human Trafficking

Call our

**24**

**HOUR  
HOTLINE**

**227- 3454**

or



HELP & SHELTER

**225- 4731**